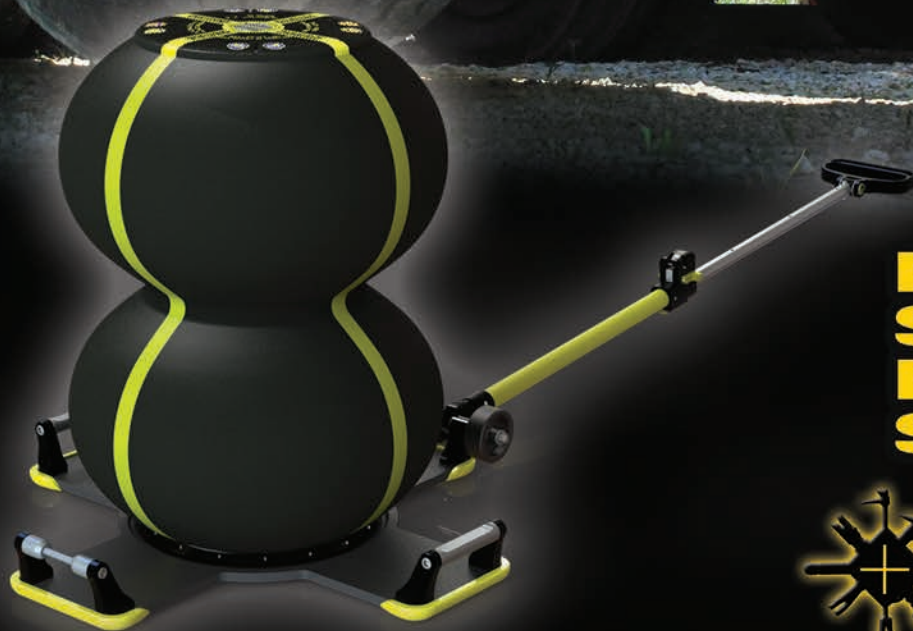


MULTI-FORCE

AIR LIFTING BAG



**HIGHER.
SAFER.
FASTER.
STRONGER.**



PARATECH®

REVOLUTIONIZE YOUR APPROACH TO LIFTING!

MULTIFORCE

AIR LIFTING BAG



Paratech's **MULTIFORCE** Air Lifting Bag takes lifting to a whole new level. Integrating the latest technology with a unique understanding of lifting, Paratech has designed the **MULTIFORCE** Air Lifting Bag to exceed expectations. Ease of use and speed of deployment make the **MULTIFORCE** Air Lifting Bag an obvious choice whether the goal is saving lives or lifting locomotives. Paratech's patent pending design ensures that the high lift of this system can get into the tightest places possible, while the innovative remote lifting base keeps personnel safely away from the load when positioning the **MULTIFORCE** Air Lifting Bag. A dual stage feature keeps the load steady as the bag inflates so load drift is minimized and safety relief valves are integrated into the bag itself making over-inflation completely impossible. No mechanical coupling between air chambers means a stronger and safer lift. The remote lifting base doubles as a storage device keeping the bag safe and making it extremely easy to store.

Paratech always puts safety first creating industry-standard products from over 50 years of experience and in-depth end user input to provide the best equipment possible to the best customers in the world.



3 KITS TO FIT YOUR LIFTING NEEDS!

MULTIFORCE AIR LIFTING BAG KITS



NEW

REMOTE PLACEMENT MULTIFORCE

The ultimate MultiForce Bag. Comes with wheels for easy transport and telescoping pole for remote placement. There is nothing quicker or safer for lifting.

- 22-88D025 MULTIFORCE 25
- 22-88D025K MULTIFORCE 25 BAG KIT
- 22-88D025DK MULTIFORCE 25 BAG KIT DIN

BASIC MULTIFORCE

Comes with a Full sized Placement Base with left and right handles, but without telescoping pole and wheels. Includes carrying strap with integrated air inlet protecting feature. Order this version if the safety of remote placement is not an option you need. Includes dual stage inflation feature.

- 22-88D025B BASIC MULTIFORCE
- 22-88D025BK MULTIFORCE BAG KIT (with saddlebag control kit)
- 22-88D025BDK MULTIFORCE BAG KIT DIN (with saddlebag control kit)

NEW

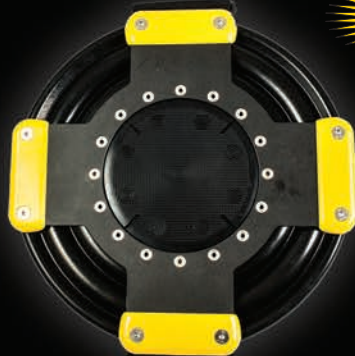


NEW

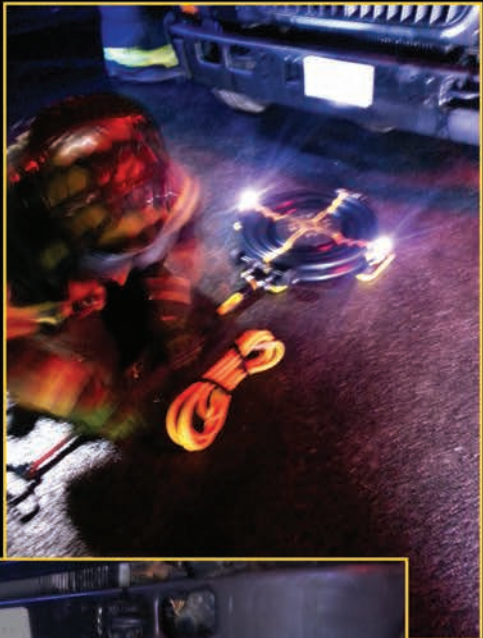
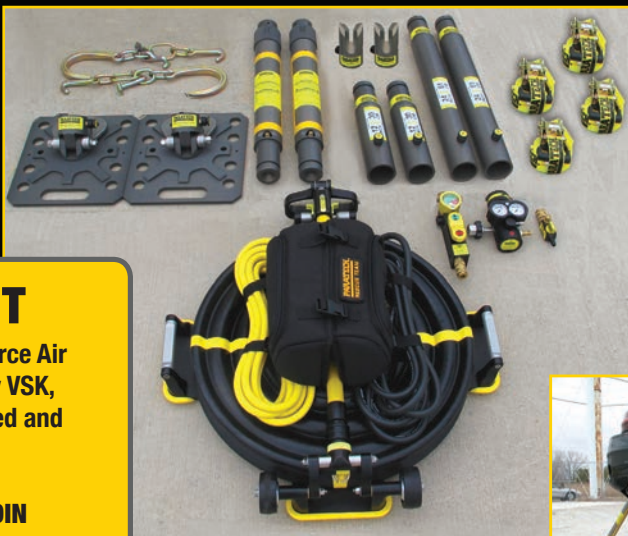
COMPACT MULTIFORCE

Comes with a reduced footprint for easier compartment storage on vehicles. Includes carrying strap with integrated air inlet protecting feature.

- 22-88D025C COMPACT MULTIFORCE
- 22-88D025CK COMPACT MULTIFORCE BAG KIT (with saddlebag control kit)
- 22-88D025CDK COMPACT MULTIFORCE BAG KIT DIN (with saddlebag control kit)



	COMPACT	BASIC	REMOTE
LIFT HEIGHT=	26 IN / 66 CM		
LIFT CAPACITY=	31 TONS / 28.1 METRIC TONS		
INSERTION HEIGHT=	4.5 IN / 11.4 CM		
STORAGE HEIGHT=	4.88 IN / 12.39 CM	4.88 IN / 12.39 CM	6 IN / 15.3 CM
WEIGHT=(without placement device)	46.2 LBS / 21 KG		
WEIGHT=(with placement device)	51.6 LBS / 23.41 KG	54.17 LBS / 24.57 KG	60.6 LBS / 27.5 KG
LENGTH=(without placement device)	23.75 IN / 60.33 CM		
LENGTH=(with placement device)	24.46 IN / 62.13 CM	28.81 IN / 73.18 CM	30.71 IN / 78 CM
WIDTH=(without placement device)	23.5 IN / 59.7 CM		
WIDTH=(with placement device)	23.63 IN / 60.02 CM	27.98 IN / 71.07 CM	27.98 IN / 71.1 CM



RAPID EXTRICATION KIT

Combining the speed of Paratech's MultiForce Air Lifting Bag with the flexibility of a Highway VSK, the Rapid Extrication Kit gets vehicles lifted and stabilized quicker than any other.

22-88DREK RAPID EXTRICATION KIT

22-88DREDK RAPID EXTRICATION KIT- DIN

Weight 190.24 lb / 86.29 kg

Part No.	Description	Quantity
22-88D025K	Multiforce 25 Bag Kit	1
22-796200	AcmeThread Strut 25-36 in / 64-91 cm	2
22-796012	Strut Extension 12 in / 30 cm	2
22-796024	Strut Extension 24 in / 61 cm	2
22-796025	Multi-Base	2
22-796180C	Hinged Base 12 w/Anchor Ring	2
22-890553	Ratchet Belt 27' WLL 3300 lbs	4
22-796161	Tie Down Keys w/J Hook	2



MULTIFORCE LED HANDLE LIGHTS

Includes two lights: one for replacing the left handle and one for the right handle. Direct retrofit. Each light operates off of two AA batteries with 300 lumens each. Up to 2 hours of continued use. Made of aircraft grade aluminum and still completely functional as lifting handles. Each light can swivel to direct the light where you want it. Light It Up!

22-892150



HEAVY-DUTY RUBBER GRIPPING SURFACE

BUILT-IN INTERNAL RELIEF VALVE

DUAL STAGE LIFTING FEATURE KEEPS THE LOAD STABLE THROUGH THE LIFT

INTEGRATED HEAVY-DUTY WHEELS FOR EASY TRAVEL

DETACHABLE PLACEMENT HANDLE EXTENDS TO 50 IN / 127 CM

LIFT HEIGHT OF 26 IN / 66 CM

HIGH VISIBILITY CENTERING STRIPES

REMOTE PLACEMENT BASE ASSISTS WITH POSITIONING AND LIFTING STABILITY

SIDE HANDLES DESIGNED TO ACCEPT FINGER HOOKS OR LARGER

CONFORMS TO EN13731-2007



LIFT HEIGHT=	26 IN / 66 CM
LIFT CAPACITY=	31 TONS / 28.1 METRIC TONS
INSERTION HEIGHT=	4.5 IN / 11.4 CM
WEIGHT=(without placement device)	46.2 LBS / 21 KG
WEIGHT=(with placement device)	60.6 LBS / 27.5 KG
LENGTH=(without placement device)	23.75 IN / 60.33 CM
LENGTH=(with placement device)	30.71 in / 78 CM
WIDTH=(without placement device)	23.5 IN / 59.7 CM
WIDTH=(with placement device)	27.98 IN / 71.10 CM
SAFETY FACTOR=(with placement device)	4 TO 1
WORKING PRESSURE=	150 PSI / 10.3 BAR

Part No.	Description	Net Weight	
		lb	kg
22-88D025	Multiforce 25	60.6	27.5
22-88D025K	Multiforce 25 Bag Kit	75.44	32.22
22-88D025DK	Multiforce 25 Bag Kit Din	75.44	32.22
22-88D025B	Basic Multiforce	54.17	24.57
22-88D025BK	Basic Multiforce Bag Kit	69.01	31.30
22-88D025BDK	Basic Multiforce Bag Kit Din	69.01	31.30
22-88D025C	Compact Multiforce	51.60	23.41
22-88D025CK	Compact Multiforce Bag Kit	66.44	30.14
22-88D025CDK	Compact Multiforce Bag Kit Din	66.44	30.14
22-890370K	Saddlebag Control Kit	14.84	6.73
22-890370DK	Saddlebag Control Kit Din	14.84	6.73
22-890370	Saddlebag Only	1.73	.78



MULTI-FORCE

AIR LIFTING BAG



PARATECH®



PARATECH®

LIFT ♦ SHIFT ♦ CONTAIN ♦ STABILIZE ♦ PENETRATE

call us at (800) 435-9358 EU: +45 66 11 24 22

or visit us on the web at www.paratech.com

MADE IN THE USA AND USED WORLDWIDE

22-0002HA